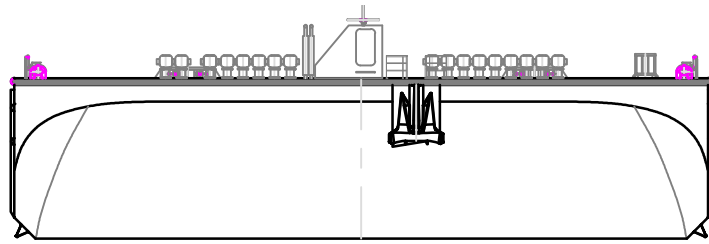


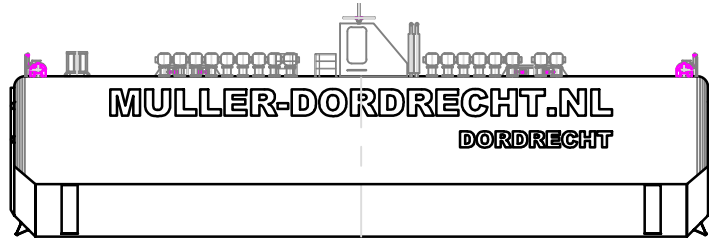
# GENERAL ARRANGEMENT

FOR INFORMATION ONLY

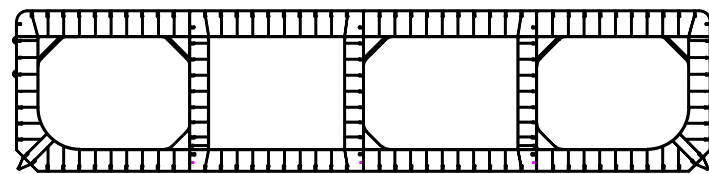
BOW VIEW



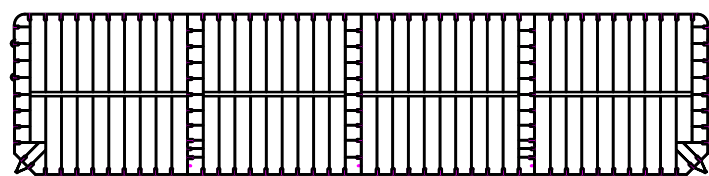
STERN VIEW



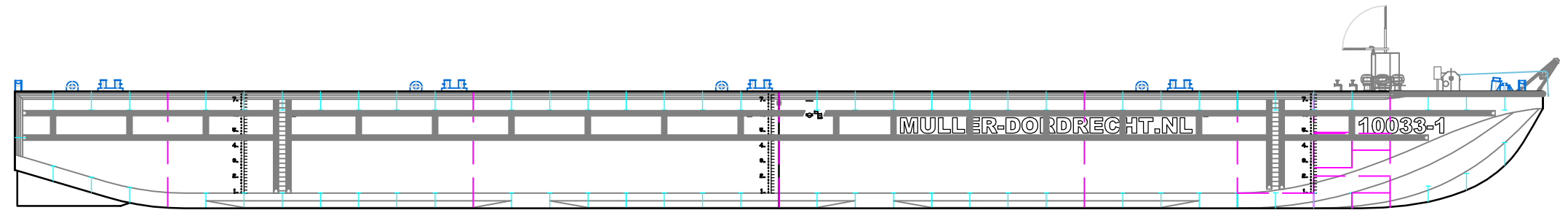
WEBFRAME SECTION



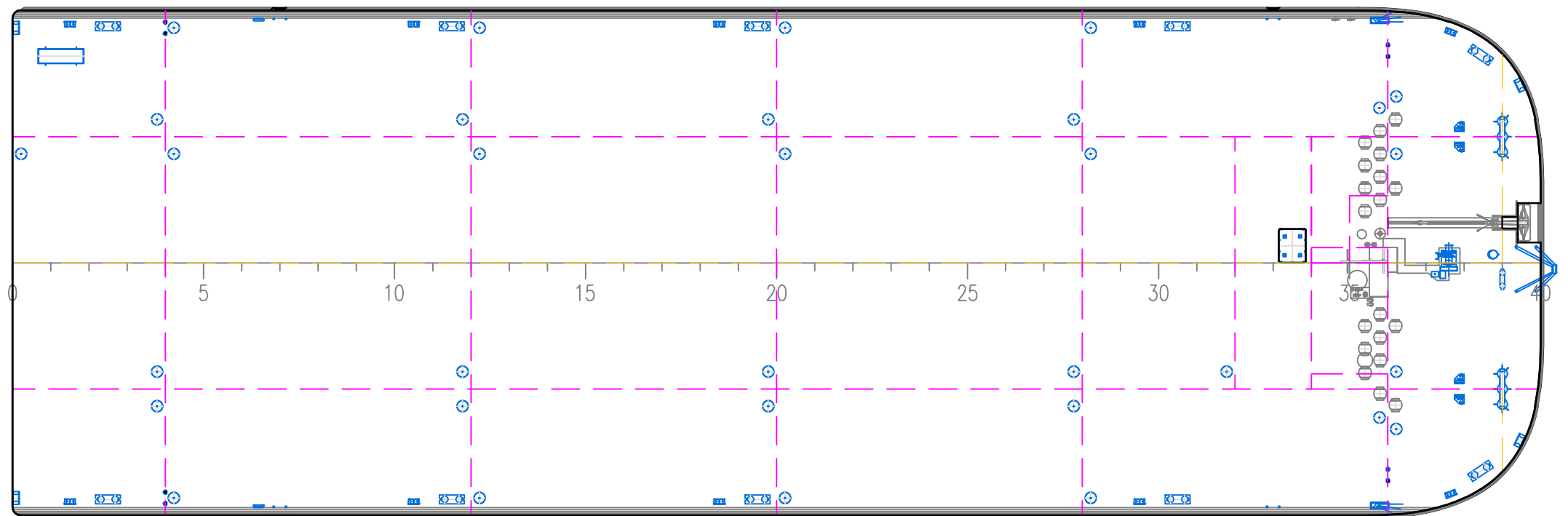
BULKHEAD SECTION



SIDE VIEW



TOP VIEW



## GENERAL PARTICULARS 10033-1

Type Seagoing Heavy Duty RoRo pontoon  
 Class BV, I+ HULL, Pontoon, Unrestricted navigation  
 Build 2013  
 Port of registry Dordrecht  
 Flag Netherlands  
 Length oa (excluding A-frame) 100.230 m  
 Width oa 33.356 m  
 Depth mld 7.600 m  
 Draft max at sea (base line) 6.048 m  
 Deck capacity (uniform) 15.00 t/m<sup>2</sup>  
 Lightweight 2872 t  
 Deadweight 16073 t  
 Net tonnage 2023 t  
 Gross tonnage 6745 t

E	BOW VIEW ADDED	JV	04-07-2017
D	MODIFIED	JDJ	07-05-2015
C	FIXED DECK EQUIPMENT ADDED	RvdG	2014-08-21
B	FULL SPEC UPDATE	AB	2014 01 27
A	VARIOUS EQUIPMENT UPDATE	AB	2013 10 20
0	FIRST ISSUE	AB	2013 04 01
NO.	REMARKS	DRAWN	DATE
Approved:		Date:	
Approved:		Date:	

## Muller Zwaar Transport BV

Merwekade 82-83, 3311TH Dordrecht  
 PObox 400, 3300AK Dordrecht  
 Phone: +31 (0)78 639 2000  
 Fax: +31 (0)78 639 2019  
 E-mail: engineering@muller-dordrecht.nl



NOTICE : This drawing and the information it contains are the property of Muller Zwaar Transport BV and may not be reproduced or used in part or in whole for any purpose except by written permission of this company.

## PONTOON 10033-1 GENERAL ARRANGEMENT

Principal	MULLER ZWAAR TRANSPORT DORDRECHT - THE NETHERLANDS	
Project	10033-1	Sheet 1
Dwg.	11.001	Nr. of Sh. 1
Projection	Scale 1 : 360	Size A3
	Drawn AB	
	Date 2013 08 28	