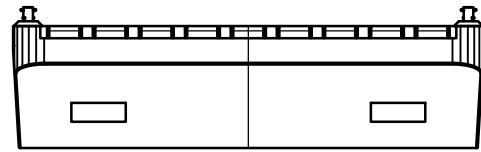
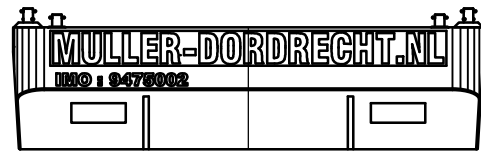


# GENERAL ARRANGEMENT

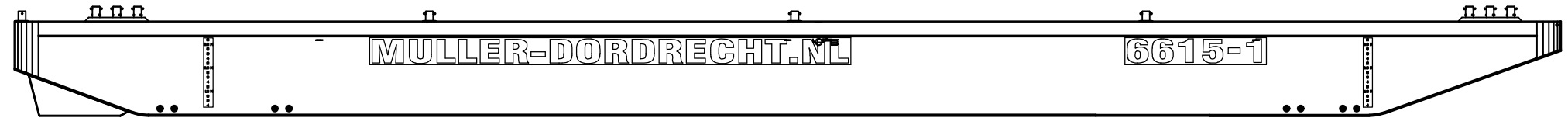
BOW VIEW



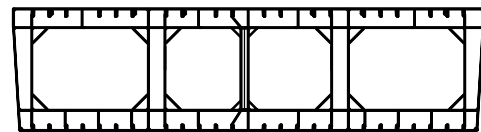
STERN VIEW



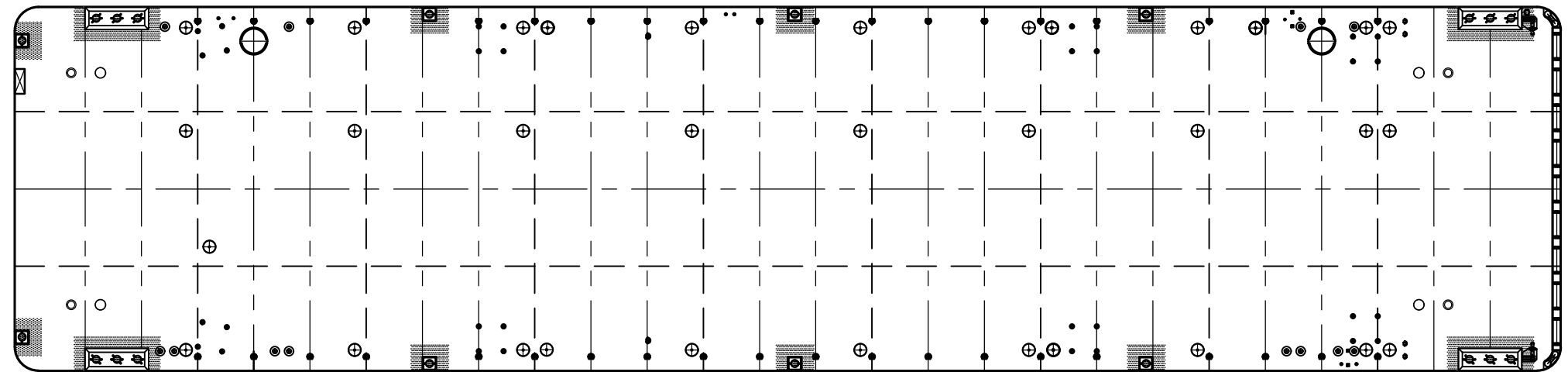
SIDE VIEW



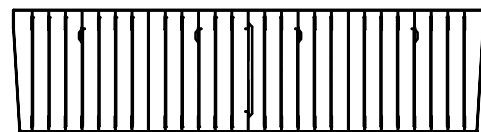
WEB FRAME



TOP VIEW



BULKHEAD



## GENERAL PARTICULARS 6615-1

Type \_\_\_\_\_ Seagoing Ro-Ro pontoon  
 Class \_\_\_\_\_ Lloyds Register  
 Imo no \_\_\_\_\_ 9475002  
 Port of registry \_\_\_\_\_ Dordrecht  
 Flag \_\_\_\_\_ Netherlands  
 Length oa \_\_\_\_\_ 66.04 m  
 Width oa \_\_\_\_\_ 15.50 m  
 Depth mld \_\_\_\_\_ 4.00 m  
 Draft max at sea (baseline) \_\_\_\_\_ 3.13 m  
 Deck capacity \_\_\_\_\_ 10.00 t/m<sup>2</sup>  
 Lightweight \_\_\_\_\_ 559 t  
 Deadweight \_\_\_\_\_ 2427 t  
 Net tonnage \_\_\_\_\_ 309 t  
 Gross tonnage \_\_\_\_\_ 1033 t

NOTE: Particulars of unit believed to be correct but not guaranteed and are subject to change

E	-	-	-
D	-	-	-
C	-	-	-
B	DWT correction	JV	19-09-2017
A	NT & GT added	JDJ	13-05-2015
0	FIRST ISSUE	JV	03-09-2010
NO.	REMARKS	DRAWN	DATE
Approved:	Date:		
Approved:	Date:		

Muller Zwaar Transport BV

Merwekade 82-83, 3311TH Dordrecht  
 PObox 400, 3300AK Dordrecht  
 Phone: +31 (0)78 639 2000  
 Fax: +31 (0)78 639 2019  
 E-mail: engineering@muller-dordrecht.nl



PONTOON 6615-1  
 GENERAL ARRANGEMENT

Principal MULLER ZWAAR TRANSPORT  
 DORDRECHT - THE NETHERLANDS

Project 6615-1 Sheet 1

Dwg. 11.001 Nr. of Sh. 1

Projection Scale 1 : 250  
 Drawn JV  
 Date 03-09-2010  
 Size A3

NOTICE : This drawing and the information it contains are the property of Muller Zwaar Transport BV and may not be reproduced or used in part or in whole for any purpose except by written permission of this company.