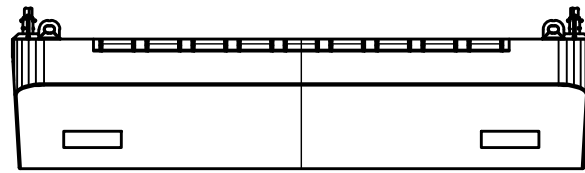
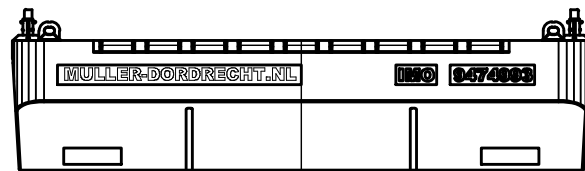


# GENERAL ARRANGEMENT

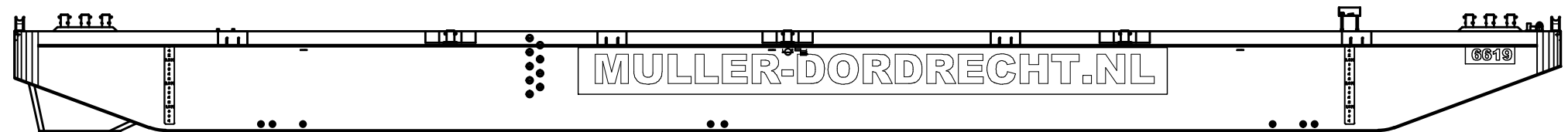
BOW VIEW



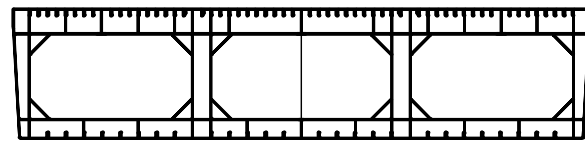
STERN VIEW



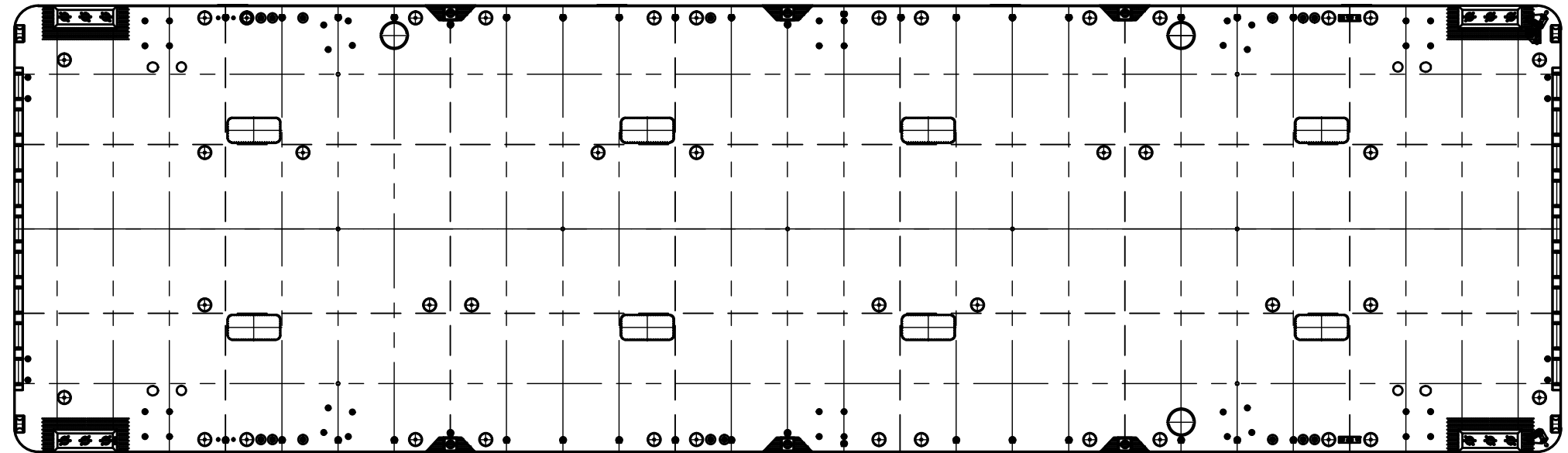
SIDE VIEW



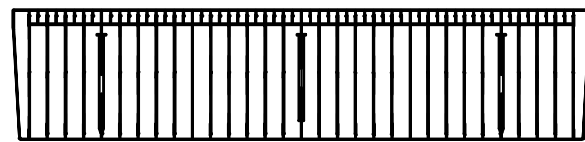
WEB FRAME



TOP VIEW



BULKHEAD



## GENERAL PARTICULARS 6619


Type	Seagoing Ro-Ro pontoon
Class	Lloyds Register
Imo no	9474993
Port of registry	Dordrecht
Flag	Netherlands
Length oa	66.04 m
Width oa	19.10 m
Depth mld	4.25 m
Draft max at sea (base line)	3.38 m
Deck capacity	15.00 t/m <sup>2</sup>
Lightweight (approved by LRS)	798 t
Deadweight	3170 t
Net tonnage	403 t
Gross tonnage	1344 t

NOTE: Particulars of unit believed to be correct but not guaranteed and are subject to change

NO.	REMARKS	DRAWN	DATE
E	-	-	-
D	-	-	-
C	-	-	-
B	NT & GT added & Layout	JDJ/JV	18-05-2015
A	LWT / DWT changed	JV	10-12-2010
0	FIRST ISSUE	JV	28-08-2010

**Muller Zwaar Transport BV**

Merwekade 82-83, 3311TH Dordrecht  
 PObox 400, 3300AK Dordrecht  
 Phone: +31 (0)78 639 2000  
 Fax: +31 (0)78 639 2019  
 E-mail: engineering@muller-dordrecht.nl



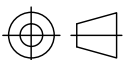
NOTICE : This drawing and the information it contains are the property of Muller Zwaar Transport BV and may not be reproduced or used in part or in whole for any purpose except by written permission of this company.

**PONTOON 6619**  
 GENERAL ARRANGEMENT

Principal **MULLER ZWAAR TRANSPORT**  
 DORDRECHT - THE NETHERLANDS

Project: 11.001

Dwg. 11.001

Projection: 

Scale: 1 : 250

Drawn: JV

Date: 26-08-2010

Sheet 1  
 Nr. of Sh. 1  
 Size A3