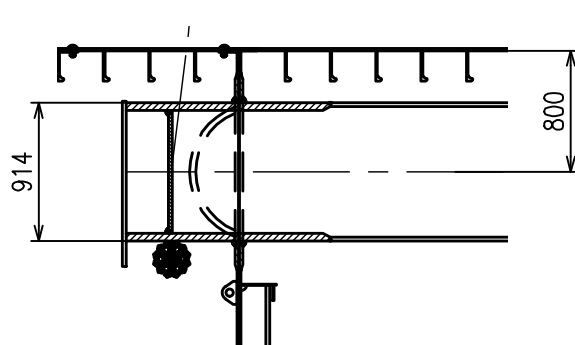
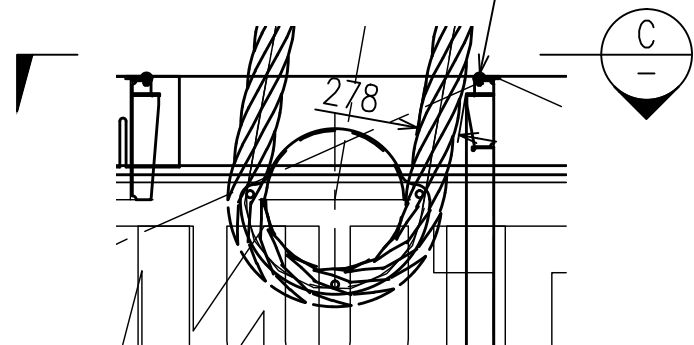


LIFTING ARRANGEMENT

DETAIL A
1 : 50

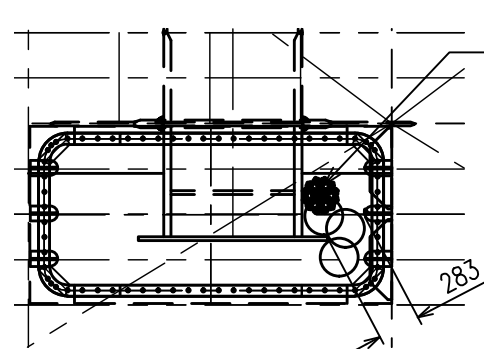
PROTECTION BAR

DETAIL B
1 : 50



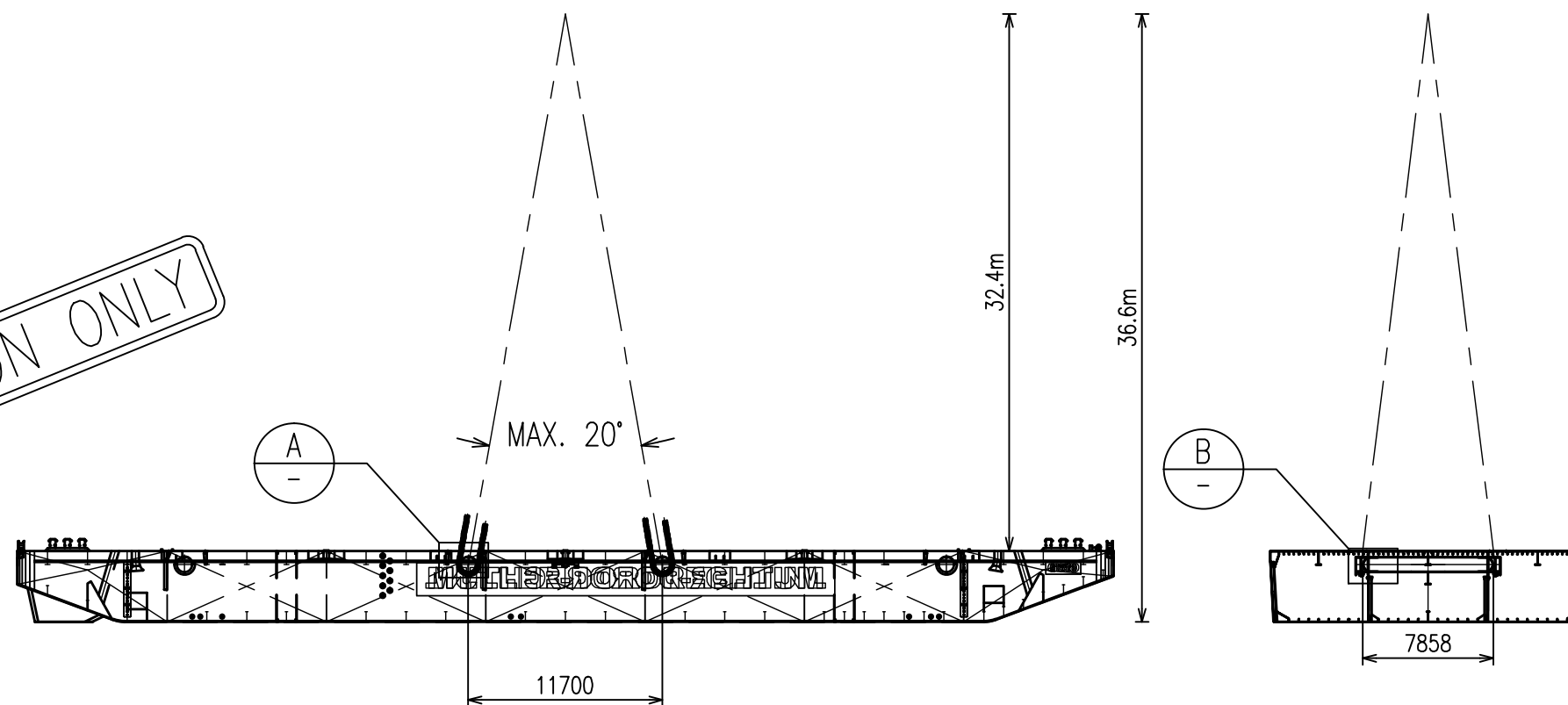
SECTION C
1 : 50

SLING DIAMETER
MAX. 250mm



SIDE VIEW
1 : 250

STERN VIEW
1 : 250



FOR INFORMATION ONLY

Remark:

MAXIMUM ALLOWABLE TEST WEIGHT APPROVED BY LLOYDS REGISTER: 3000t
 THE MAXIMUM ALLOWABLE TEST WEIGHT IS BASED ON:
 WEIGHT CONTINGENCY: 0.5%
 RIGGING WEIGHT: 150t
 GROMMET: ABT. 70m CIRC. EACH AND MATCHED PAIRS ACC. IMCA 179
 BALLAST EQUIPMENT WEIGHT: 5t
 DAF: 1.05
 SKL: 1.2 (‰)

MAXIMUM OPERATIONAL LOAD PER LIFTING POINT: 923t
 MAXIMUM ANGLE BETWEEN ADJACENT SLINGS: 20°

THIS LIFTING ARRANGEMENT IS TYPICAL. OTHER CONFIGURATIONS CAN BE ENGINEERED AT REQUEST.

BALLAST CONFIGURATION TO BE DETERMINED BASED ON TEST WEIGHT AND LIFTING ARRANGEMENT.

NOTE: Particulars of unit believed to be correct but not guaranteed and are subject to change

E	-	-	-
D	-	-	-
C	-	-	-
B	DETAILS ADDED	JV	27-08-2015
A	LAYOUT CHANGED / REMARK UP-DATE	JV	11-06-2015
0	FIRST ISSUE	JV	12-10-2010
NO.	REMARKS	DRAWN	DATE
Approved:		Date:	
Approved:		Date:	

Muller Zwaar Transport BV

Merwekade 82-83, 3311TH Dordrecht
 PObox 400, 3300AK Dordrecht
 Phone: +31 (0)78 639 2000
 Fax: +31 (0)78 639 2019
 E-mail: engineering@muller-dordrecht.nl



TEST PONTOON 6619
 LIFTING ARRANGEMENT
 FOUR POINT LIFT / SINGLE HOOK
 Principal **MULLER ZWAAR TRANSPORT**
 DORDRECHT - THE NETHERLANDS

Project	6619	Sheet	1
Dwg.	19.002	Nr. of Sh.	1
Projection	Scale	1 : 200	Size
	Drawn	JV	A3
	Date	12-10-2010	

NOTICE : This drawing and the information it contains are the property of Muller Zwaar Transport BV and may not be reproduced or used in part or in whole for any purpose except by written permission of this company.